



Ministry of Economic Affairs



Ministry of Economic Affairs

## The Natural Way Forward

Government Vision 2014

## Dutch Nature vision

<http://www.government.nl/documents-and-publications/reports/2014/05/20/the-natural-way-forward-government-vision-2014.html>

New approaches in protecting nature:

- With and by society
- From good to better nature





## Policy shift:

From protecting nature against society

To strengthening nature with and by society

Key question: Effective, efficient and resilient nature policy



# Policy shift

## *Finding new balances*

Investing in nature reserves		Investing in sustainable production & consumption
Protecting vulnerable species & ecosystems		Improving conditions for natural dynamics of ecosystems
Government-imposed policies		Ambition-driven social initiatives
Isolating nature		Combining nature with other social issues
Nature-oriented policies		Welfare-oriented policies



## Case Grevelingen

- Unnatural and unstable system
- Losing existing values
- High level management costs
  
- Future lasting realm strategy
- Reintroducing tidal movement and salt water
- Robust climate proof natural estuarine system
  
- Synergy with:
  - Agriculture
  - Recreation
  - Water framework directive
  - energy



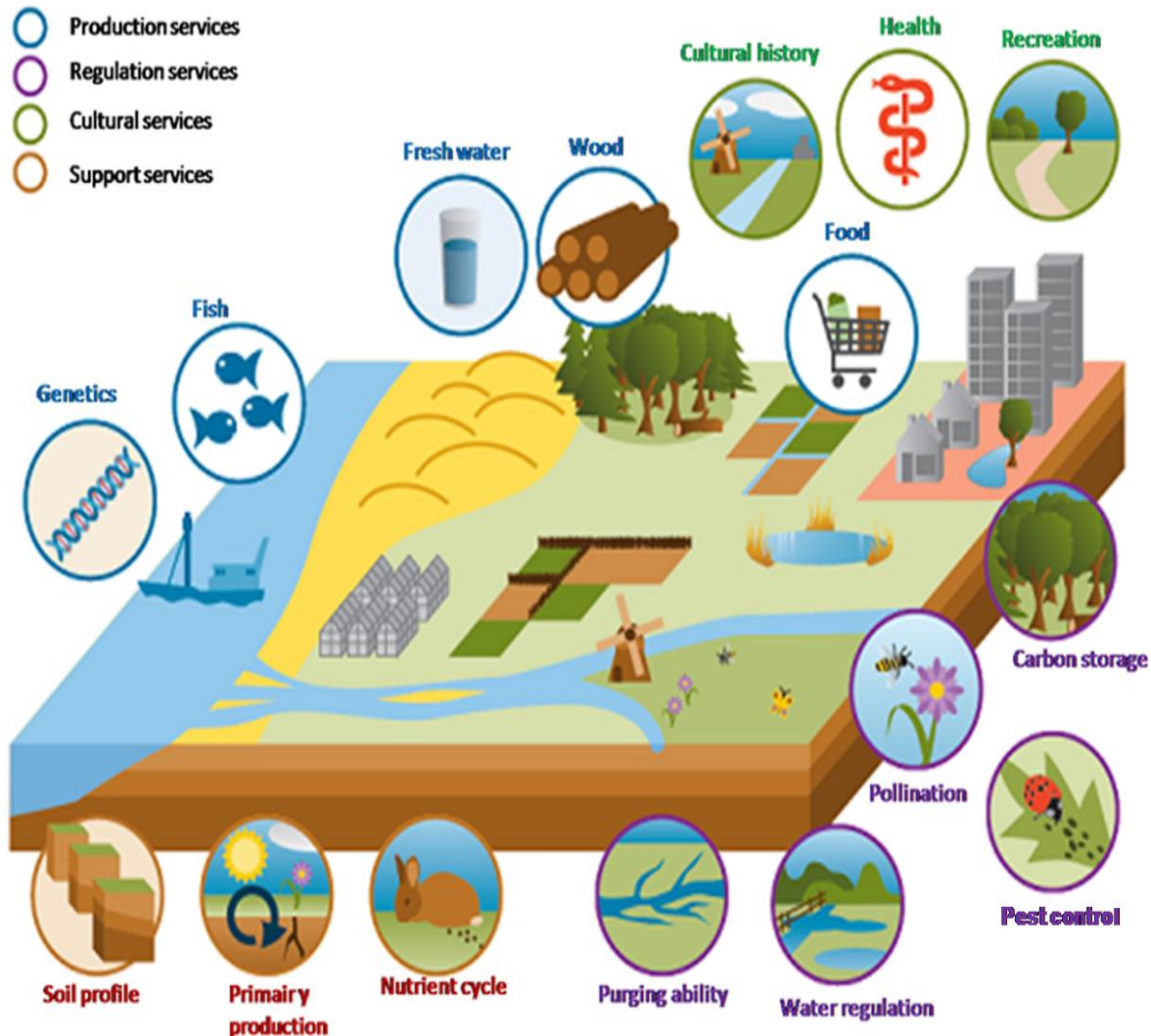
© Wilco's Pies 2012



# Nurture Natural Capital

**Growing awareness:**  
ecosystems contribute to  
welfare and economy

**Societal involvement:**  
From spectators to  
participants.





## Input to European policies?

- Mid term evaluation Biodiversity strategy
- Fitness check
- Regulation
- Integration and mainstreaming
  
- Nature Outlook



## Way forward

- More and better Nature
- Efficient, effective and resilient
- With and by society
- Integration and mainstreaming
- System approach
- Flexibility and regulation





## The Way forward in practise: Nature and business

Nature in port area:

Biodiversity on wastelands and forgotten corners

(see image on pg 7, vision document)



## The Way forward in practise: Nature and citizens

Nature and city infrastructure:

(see image on pg 20 of vision document)



## The Way Forward in practise: Hondsbosse Sea Wall

- A weak spot in our flood defence system
- Rock substrate in a sandy coast
- Habitat to rare species (in NL at least, not along the North Sea coast)
- 'Building with nature' solution brings back the sandy coastline

